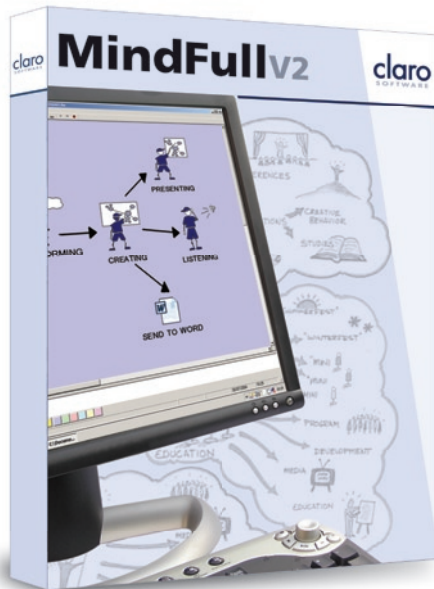


MindFull v2

claro
SOFTWARE

...specially designed for dyslexic users



www.clarosoftware.com

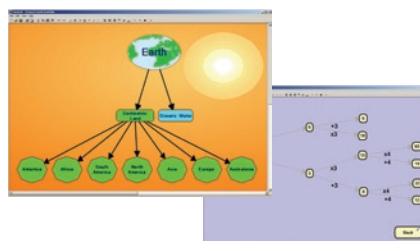
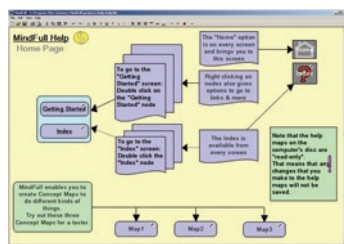
Features include:

- ▶ Straightforward interface and a simple way to make Sound Maps.
- ▶ Normal view and outline view and the possibility of making quick nodes when entering information.
- ▶ Mindfull V2 enables you to send the content directly to Microsoft Word. You can create links from one Concept Map to another, as well as links to a Web page, Word document or Powerpoint slide.

About Concept Mapping:

Concept maps are an aid to learn, memorise, organise and have several other uses. They are advantageous for anybody, but especially for those who prefer support for their literacy skills.

They are just a way of processing material, organising thoughts and ideas in a very effective way. Many individuals who have literacy problems cannot meet the requirements of the school. The traditional western education prefers the left hemisphere functions. Therefore those who show a disposition to verbalism and can process information in a sequential way are at an advantage in the school, whereas those who are rather visual and parallel, global thinkers often feel uncomfortable in the current education. The most of the underachievers are visual and are global thinkers. However, these persons can be very successful in the real life.



Claro Software Ltd

web: www.clarosoftware.com email: sales@clarosoftware.com
Premier House, Room 31, Church Street, Preston, Lancashire, UK, PR1 3BQ
Tel : +44 (0) 870 760 5877 Fax: +44 (0) 870 132 7471