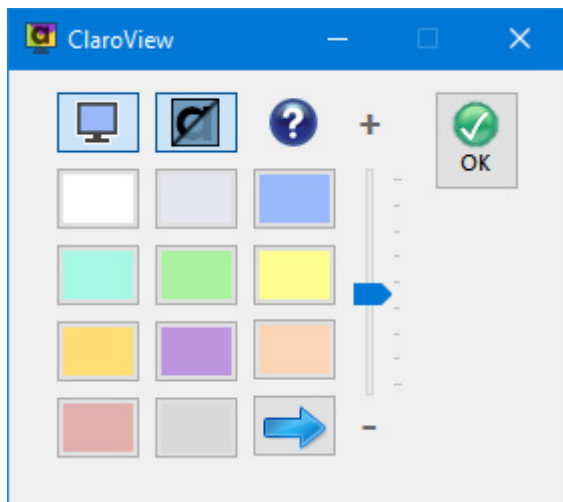




# ClaroView 3.0 Manual

# Introduction to ClaroView

Thank you for choosing ClaroView. ClaroView is an innovative but simple piece of software to allow you to better view your PC screen. It can change the colour of the screen "overlay" and you can vary the tint level.

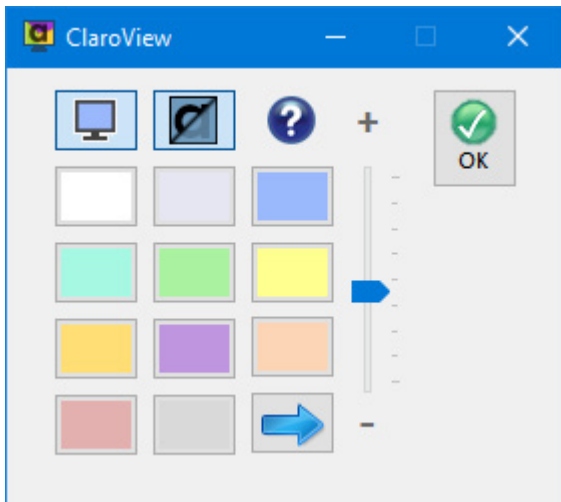


ClaroView will work with any piece of software, as it acts as an "overlay" on the PC screen. From a technical point of view, it will not interfere or clash with your PC video card.

If you want to run ScreenRuler at the same time as ClaroView, please run ClaroView first.

# ClaroView Operation

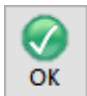
Launch ClaroView from the Start Menu. It will stay as an open application and will work with all other software.




Choose the colour of your screen tint by clicking on one of the 11 standard colours.

Use the slider to change the level of the tint.




Click  to fix the colour and minimise ClaroView to the Windows notification area, at the bottom right of your desktop.




Click  to turn screen tint on or off.




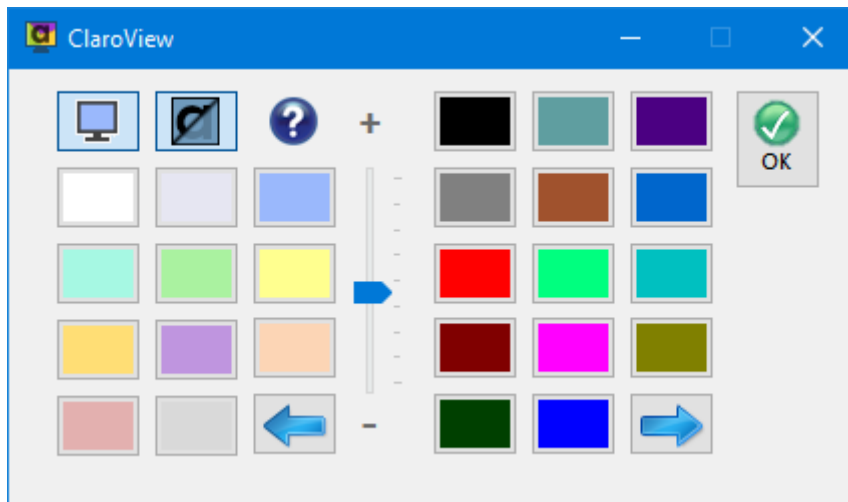
Click  to turn TrueBlack mode on or off. TrueBlack mode tints light pixels more than dark pixels. In most situations, it will tint the page background and leave text unchanged.




Click  to open the ClaroView help.

## Additional Colours

Click  to show a set of additional colours.



Click  again to choose a colour from the full colour palette, or to define a custom colour.